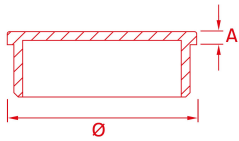


A10 Railing

1201

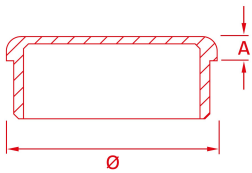
TX - Tapon plano



Referencia	T	E	A	316B	304B	304S	304M	316S	316
TX-12	12	1	3	●				●	
TX-20	20	1,5	3	●				●	
TX-25	25	1,5	3	●				●	
TX-30	30	1,5	3	●				●	
TX-33	33	1,5	3	●				●	
TX-38	38	1,5	3	●	●			●	
TX-40	40	1,5	3	●				●	
TX-43	43	1,5	3	●				●	
TX-50	50	1,5	3	●				●	
TX-63	63,5	1,5	3	●				●	

1202

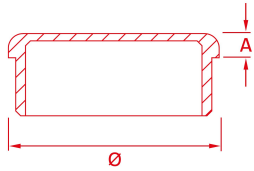
TPF - Tapon c/radio



Referencia	T	E	A	316B	304B	304S	304M	316S	316
TPF-12	12	1	3	●					
TPF-15	15	1,5	4	●					
TPF-18	18	1,5	4	●					
TPF-20	20	1,5	4	●					
TPF-25	25	1,5	4	●				●	
TPF-30	30	1,5	5	●				●	
TPF-33	33	1,5	5	●				●	
TPF-38	38	1,5	6	●				●	
TPF-40	40	1,5	5	●				●	
TPF-43	43	1,5	5	●	●			●	
TPF-50	50,8	1,5	6	●				●	
TPF-63	63,5	1,5	5	●				●	

1202

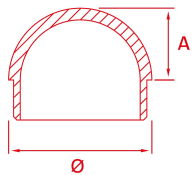
TP - Tapon c/radio



Referencia	T	E	A	316B	304B	304S	304M	316S	316
TPF-12	12	1	3	●					
TPF-15	15	1,5	4	●					
TPF-18	18	1,5	4	●					
TPF-20	20	1,5	4	●					
TPF-25	25	1,5	4	●				●	
TPF-30	30	1,5	5	●				●	
TPF-33	33	1,5	5	●				●	
TPF-38	38	1,5	6	●				●	
TPF-40	40	1,5	5	●				●	
TPF-43	43	1,5	5	●	●			●	
TPF-50	50,8	1,5	6	●				●	
TPF-63	63,5	1,5	5	●				●	

1205

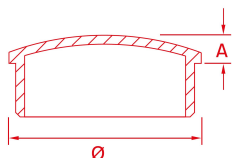
TPE - Tapon esferico



Referencia	T	E	A	316B	304B	304S	304M	316S	316
TPE-43	43	1,5	22	●				●	
TPE-50	50,8	1,5	26	●					

1203

TPS - Tapon semiesferico



Referencia	T	E	A
TPS-43	43	1,5	6
TPS-50	50,8	1,5	8
TPS-84	84	2	6,5

316B	304B	304S	304M	316S	316
●				●	
●				●	
●				●	

1208

TCC - Terminacion codo
ciego



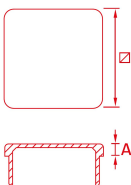
imagen no disponible

Referencia	T	E	A	B
TCC-43	43	1,5	62	62

316B	304B	304S	304M	316S	316
●					

1204

TC - Tapon cuadrado

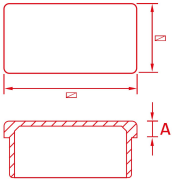


Referencia	T	E	A
TC-20	20x20	1,5	5
TC-30	30x30	1,5	5
TC-40	40x40	1,5	5
TC-50	50x50	1,5	5

316B	304B	304S	304M	316S	316
●				●	
●				●	
●				●	
●				●	

1207

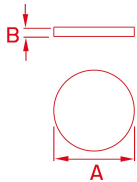
TC-40/20 - Tapon
rectangular



Referencia	T	E	A	316B	304B	304S	304M	316S	316
TC-40	40x20	1,5	5	●				●	

2101

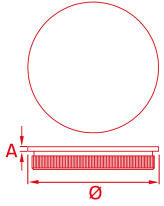
DI - Disco



Referencia	T	E	316B	304B	304S	304M	316S	316
DI-100X3	100	3						●
DI-30X2	30	2						●
DI-38X2	38	2						●
DI-40X2	40	2						●
DI-43X2	43	2						●
DI-60X2	60	2						●
DI-60X3	60	3						●
DI-80X2	80	2						●
DI-80X3	80	3						●

1206

TPG - Tapon
cilindricografilado **presion
no cola**

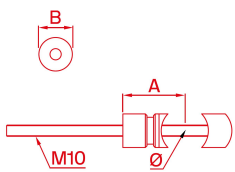


Referencia	T	E	A
TPG-43	43	1,5	1,5
TPG-50	50,8	1,5	1,5

316B	304B	304S	304M	316S	316
●					
●					

1819

SLRR - Anclaje para tubo
cilindrico

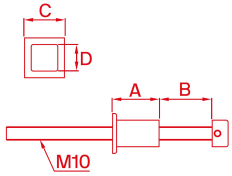


Referencia	T	B
SLRR-43	43	30

316B	304B	304S	304M	316S	316
●				●	

1820

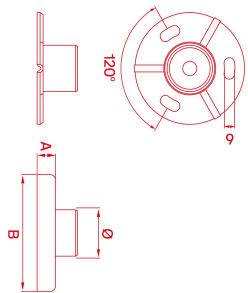
SLS - Anclaje para tubo cuadrado o rectangular a lateral



Referencia	A	B	C	D	316B	304B	304S	304M	316S	316
SLS-20	35	40	30	20	●				●	

1807

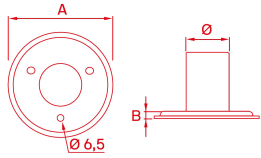
PTI - Pletina con mecha y embellecedor tapa cilindrico



Referencia	T	A	B	316B	304B	304S	304M	316S	316
PTI-43	43	15	100	●	●			●	
PTI-50	50	15	100	●				●	

1806

PMI - Pletina cilíndrica con mecha



Referencia	T	E	A	B
PMI-30	30	1,5	64	5
PMI-38	38	1,5	87	5
PMI-43	43	1,5	97	5
PMI-50	50,8	1,5	97	5

316B	304B	304S	304M	316S	316
					●
					●
					●
					●

1809

PMZ - Pletina con mecha cuadrada y embellecedor



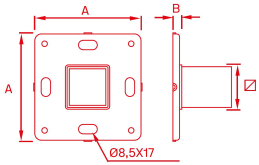
imagen no disponible

Referencia	E	A	B
PMZ-40	1,5	100	26

316B	304B	304S	304M	316S	316
●				●	

1808

PMQ - Pletina cuadrada con mecha

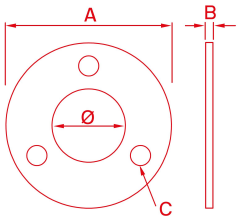


Referencia	E	A	B
PMQ-40	1,5	98	8

316B	304B	304S	304M	316S	316
					●

1815

PS - Pletina para soldar

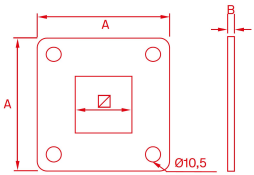


Referencia	T	A	B	C
PS-48	20	50	2	5.5
PS-63	25	60	3	6.5
PS-88	38	85	3	8.5
PS-98	43	96	5	12
PS-118	115	5	12	
PS-136	136	8	13	

316B	304B	304S	304M	316S	316
					●
					●
					●
					●
					●
					●

1818

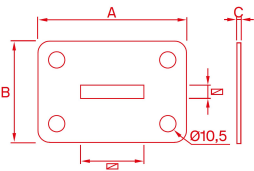
PSZ - Pletina cuadrada para soldar



Referencia	A	B	316B	304B	304S	304M	316S	316
PSZ-30	95	4						●
PSZ-40	95	4						●
PSZ-50	95	4						●

1817

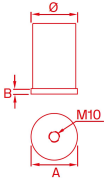
PSR - Pletina rectangular para soldar



Referencia	A	B	C	316B	304B	304S	304M	316S	316
PSR-40	95	65	4						●
PSR-50	95	65	4						●

1810

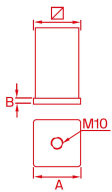
MRR - Mecha cilindrica con rosca



Referencia	T	E	A	B	316B	304B	304S	304M	316S	316
MRR-38	38	1,5	43	5	●				●	
MRR-43	43	1,5	43	5	●				●	

1811

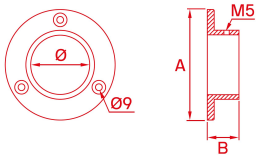
MRQ - Mecha cuadrada con rosca



Referencia	E	A	B	316B	304B	304S	304M	316S	316
MRQ-30	2	30	5	●				●	
MRQ-40	2	40	5	●				●	

1802

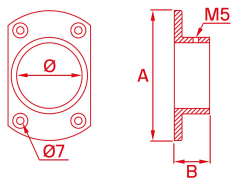
BFC - Base cilíndrica para pared



Referencia	T	A	B	316B	304B	304S	304M	316S	316
BFC-43	43	80	25	●				●	
BFC-50	50	80	25	●				●	

1804

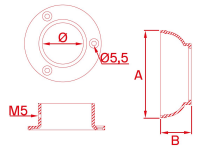
BFE - Base entallada para pared



Referencia	T	A	B	316B	304B	304S	304M	316S	316
BFE-43	43	86	25	●				●	
BFE-50	50	86	25	●				●	

1805

BFT - Base cilíndrica con tapa para pared

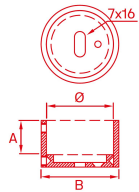


Referencia	T	A	B
BFT-43	43	82	28

316B	304B	304S	304M	316S	316
●				●	

1812

BFS - Base cilíndrica con casquillo a pared

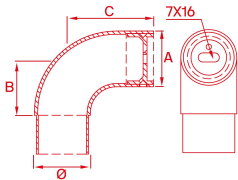


Referencia	T	A	B
BFS-43	43	20	50

316B	304B	304S	304M	316S	316
●				●	

1814

BCN - Base con codo para pared sin placa



Referencia	T	E	A	B	C
BCN-38	38	1,5	38	38,5	65
BCN-43	43	1,5	43	43,5	70

316B	304B	304S	304M	316S	316
●				●	
●				●	

1821

BFQ -

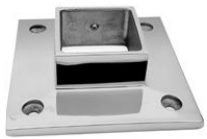


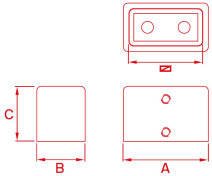
imagen no disponible

Referencia
BFQ-40

316B	304B	304S	304M	316S	316
●					

1813

BFRE - Base de pared para tubo rectangular



Referencia

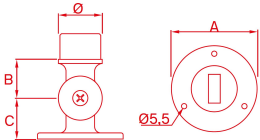
BFRE-40

316B 304B 304S 304M 316S 316



1801

BFA - Base articulada



Referencia

BFA-43

T E A B C

43 1,5 83 37 40

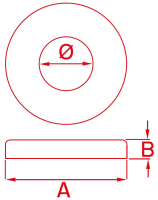
316B 304B 304S 304M 316S 316



1901

TI CILÍNDRICO -

Embellecedor tapa cilindrico



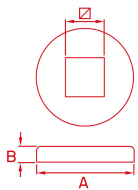
Referencia	T	A	B
TI-65	10	65	12
TI-50	20	53	10
TI-90			
TI-100	43	100	15
TI-120	63,5	100	15
TI-140	84	140	15

316B	304B	304S	304M	316S	316
●				●	
●				●	
●				●	
●	●			●	
●					
●				●	

1910

TI CUADRADO -

Embellecedor cilindrico para tubo cuadrado

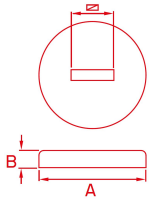


Referencia	A	B
TI-40X40	100	15
TI-50x50	100	15

316B	304B	304S	304M	316S	316
●					
●					

1909

TI RECTANGULAR -
Embellecedor cilindrico para
tubo rectangular

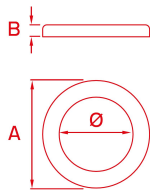


Referencia	A	B
TI-40X10	90	15
TI-40X8	90	15
TI-50X10	90	15
TI-50X8	90	15

316B	304B	304S	304M	316S	316
●					
●					
●					
●					

1904

FC - Embellecedor estrecho
para tubo cilindrico

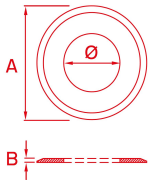


Referencia	T	A	B
FC-43	43	63	7

316B	304B	304S	304M	316S	316
●				●	

1906

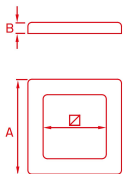
PB - Pletina cilíndrica
biselada



Referencia	T	A	B	316B	304B	304S	304M	316S	316
PB-85	43	85	3	●					

1905

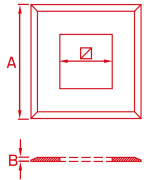
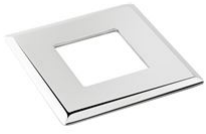
FQ - Embellecedor estrecho
para tubo cuadrado



Referencia	A	B	C	316B	304B	304S	304M	316S	316
FQ-40	60	7	7	●				●	

1907

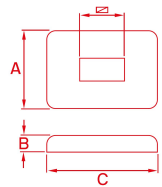
PBQ - Pletina cuadrada
biselada



Referencia	E	A	C	316B	304B	304S	304M	316S	316
PBQ-40	3	85	3	●					

1902

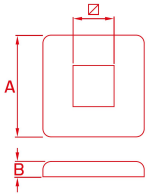
ZR - Embellecedor tapa
rectangular



Referencia	A	B	C	316B	304B	304S	304M	316S	316
ZR-40	70	15	100	●				●	
ZR-50	70	15	100	●				●	

1902

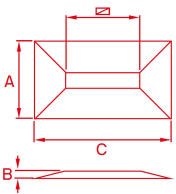
Z - Embellecedor tapa cuadrado



Referencia	A	B	316B	304B	304S	304M	316S	316
Z-100	100	15	●				●	

1912

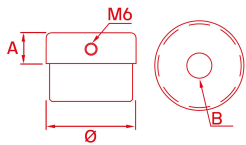
FR - Embellecedor rectangular



Referencia	A	B	C	316B	304B	304S	304M	316S	316
FR-30	53	4	82	●					
FR-40	53	4	93	●					
FR-50	53	4	93	●					

1301

NF - Nucleo tubo cilindrico para varilla 12

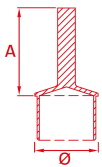


Referencia	T	E	A	B
NF-43	43	1,5	15	12
NF-50	50,8	1,5	15	12

316B	304B	304S	304M	316S	316
●				●	
●					

1306

NS - Nucleo cilindrico para soldar



Referencia	T	E	A
NS-43	43	1,5	60
NS-50	50,8	1,5	60

316B	304B	304S	304M	316S	316
●	●			●	
●					

1307

NMR - Nucleo cilindrico
c/varilla y mensula

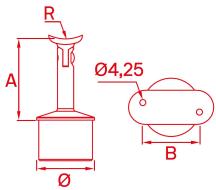


imagen no disponible

Referencia	T	E	A	B	316B	304B	304S	304M	316S	316
NMR-43	43	1,5	60	42	●	●			●	

1308

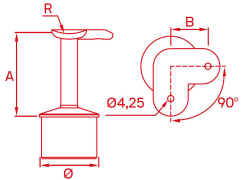
NRR - Nucleo cilindrico
c/varilla articulada y mensula



Referencia	T	E	A	B	316B	304B	304S	304M	316S	316
NRR-43	43	1,5	60	42	●	●			●	

1309

NE - Nucleo cilindrico para esquina con mensula

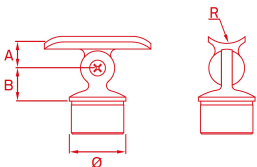


Referencia	T	E	A	B
NE-43	43	1,5	60	23

316B	304B	304S	304M	316S	316
●					

1313

NBR - Nucleo articulado para tubo cilindrico



Referencia	T	E	A	B
NBR-43	43	1,5	23	25

316B	304B	304S	304M	316S	316
●				●	

1401

V - Varilla recta para soldar



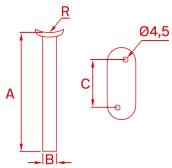
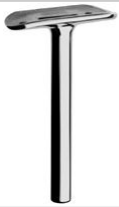
imagen no disponible

Referencia	A	B
V-12	100	12

316B	304B	304S	304M	316S	316
●				●	

1402

VMR - Varilla recta con mensula curva

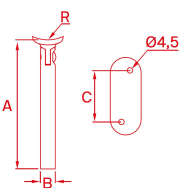


Referencia	A	B	C
VM-R	100	12	45

316B	304B	304S	304M	316S	316
●				●	

1404

VRR - Varilla articulada con mensula curva

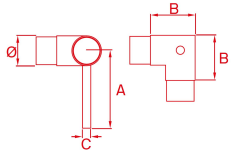


Referencia	A	B	C
VR-R	100	12	45

316B	304B	304S	304M	316S	316
●				●	

1407

VE - Varilla con escuadra

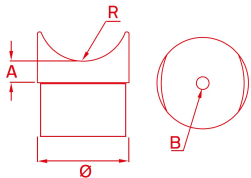


Referencia	T	E	A	B	C
VE-43	43	1,5	120	55	12

316B	304B	304S	304M	316S	316
●				●	

1304

CR-300 - Nucleo conector
c/radio

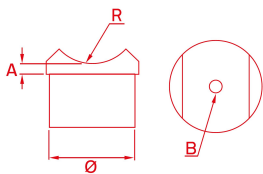


Referencia	T	E	A	B
CR-300	43	1,5	10	7

316B	304B	304S	304M	316S	316
●				●	

1305

CR-301 - Nucleo conector
achaflanado

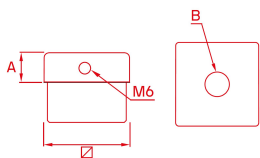


Referencia	T	E	A	B
CR-301	43	1,5	10	10

316B	304B	304S	304M	316S	316
●				●	

1302

NC - Nucleo tubo cuadrado
para varilla 12

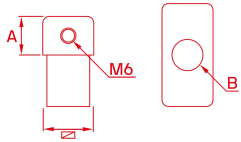


Referencia	E	A	B
NC-40	1,5	15	12
NC-50			

316B	304B	304S	304M	316S	316
●				●	
●					

1314

NR - Nucleo tubo rectangular



Referencia

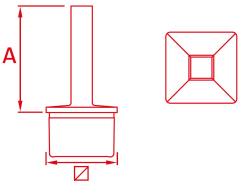
NR-40

316B 304B 304S 304M 316S 316



1310

NQS - Nucleo cuadrado con varilla para soldar



Referencia

NQS-40

E

A

1,5

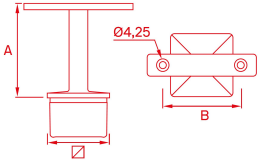
6

316B 304B 304S 304M 316S 316



1311

NQM - Nucleo cuadrado con varilla y mensula

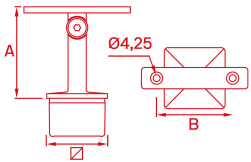


Referencia	E	A	B
NQM-40	1,5	60	50

316B	304B	304S	304M	316S	316
●				●	

1312

NQR - Nucleo cuadrado con varilla articulada y mensula

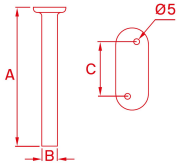


Referencia
NQR-40

316B	304B	304S	304M	316S	316
●				●	

1403

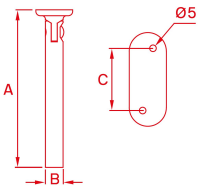
VMP - Varilla recta con mensula plana



Referencia	A	B	C	316B	304B	304S	304M	316S	316
VM-P	100	12	45	●				●	

1405

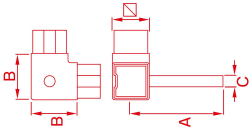
VRP - Varilla articulada con mensula plana



Referencia	A	B	C	316B	304B	304S	304M	316S	316
VR-P	100	12	45	●				●	

1408

VEQ - Varilla con escuadra
para tubo cuadrado

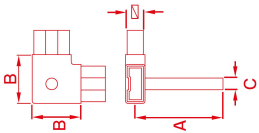


Referencia	E	A	B	C
VEQ-40	1,5	80	50	12

316B	304B	304S	304M	316S	316
●				●	

1409

VER - Varilla con escuadra
para tubo rectangular

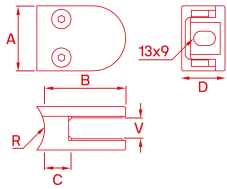


Referencia	E	A	B	C
VER-40	1,5	80	50	12

316B	304B	304S	304M	316S	316
●				●	

1103

PVR - Pinza apoyo curvo



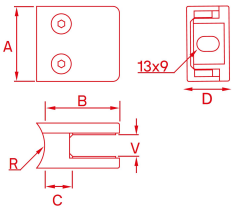
Referencia

PVR-10					
PVR-6	40	55	18	21.5	6/8
PVR-8	40	55	18	21.5	8/10
PVR-4	30	36	10	4/6	

316B	304B	304S	304M	316S	316
●				●	
●	●		●	●	
●	●		●	●	
	●				

1104

PVRC - Pinza cuadrada med. apoyo curvo



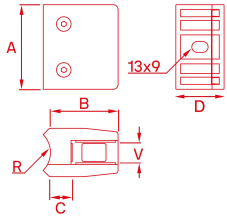
Referencia

Referencia	A	B	C	V
PVRC-6	45	45	18	6/8
PVRC-8	45	45	18	8/10
PVRC-10				
PVRC-16				

316B	304B	304S	304M	316S	316
●					
●					
●					
●				●	

1106

PVRL - Pinza cuadrada grande apoyo curvo

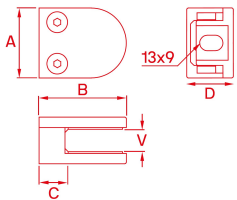


Referencia	A	B	C	R
PVRL-16	70	56	23	16.76/17,52

316B	304B	304S	304M	316S	316
●					

1101

PV - Pinza apoyo plano

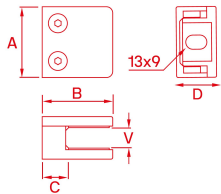


Referencia	A	B	C	R
PV-10				
PV-6	40	55	18	6/8
PV-8	40	55	18	8/10

316B	304B	304S	304M	316S	316
●				●	
●	●		●	●	
●	●		●	●	

1102

PVC - Pinza cuadrada med.
apoyo plano



Referencia

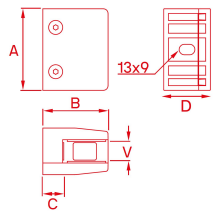
Referencia	A	B	C	R
PVC-10				
PVC-6	45	45	18	6/8
PVC-8	45	45	18	8/10
PVC-16				
PVC-4	30	30	10	4/6

316B 304B 304S 304M 316S 316

316B	304B	304S	304M	316S	316
●				●	
●	●			●	
●	●			●	
●				●	
	●				

1105

PVL - Pinza cuadrada grande
apoyo plano



Referencia A B C R

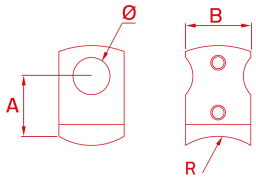
Referencia	A	B	C	R
PVL-16	40	55	18	16.76/17,52

316B 304B 304S 304M 316S 316

316B	304B	304S	304M	316S	316
●					

1601

F - Casquillo articulado
apoyo curvo

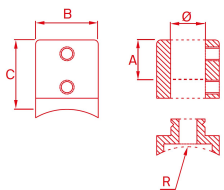


Referencia	T	A	B
F-22	12	20	22
F-30	20	30	30

316B	304B	304S	304M	316S	316
●				●	
●				●	

1603

CRR - Casquillo desmontable
apoyo curvo

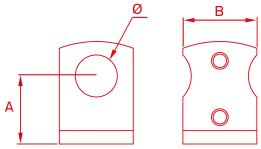


Referencia	T	A	B	C
CRR-12	12	15	22	25
CRR-20	20	15	25	25

316B	304B	304S	304M	316S	316
●				●	
●				●	

1602

FP -



Referencia

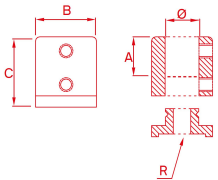
FP-22			
FP-30	20	30	30

316B 304B 304S 304M 316S 316

●	●			●	
●					

1604

CRP - Casquillo desmontable
apoyo plano



Referencia

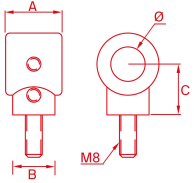
	T	A	B	C	
CRP-20	20	15	25	25	
CRP-12	12	2	15	22	25

316B 304B 304S 304M 316S 316

●				●	
●				●	

1605

CF - Casquillo desmontable para varilla apoyo plano

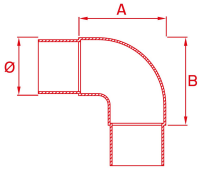


Referencia	T	A	B	C
CF-12	12	20	15	15

316B	304B	304S	304M	316S	316
●				●	

1702

E-21 - Codo

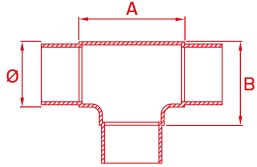


Referencia	T	E	A	B
E-21	38	1,5	65	65

316B	304B	304S	304M	316S	316
●	●			●	

1703

E-22 - Te de tres salidas

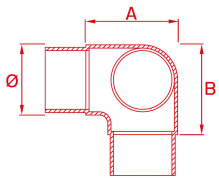


Referencia	T	E	A	B
E-22	38	1,5	60	51

316B	304B	304S	304M	316S	316
●				●	

1704

E-25 - Uadra de tres salidas

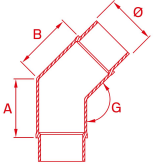


Referencia	T	E	A	B
E-25	38	1,5	51	51

316B	304B	304S	304M	316S	316
●					

1705

E-26 - Codo a 135°

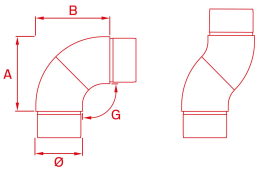


Referencia	T	E	A	B
E-26	43	1,5	50	50

316B	304B	304S	304M	316S	316
●				●	

1706

E-27 - Codo giratorio

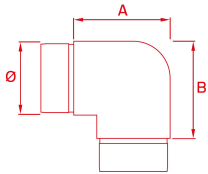


Referencia	T	E	A	B	G
E-27	43	1,5	55	55	90-180

316B	304B	304S	304M	316S	316
●					

1707

E-28 - Uadra

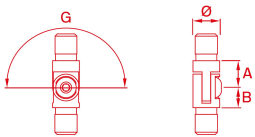


Referencia	T	E	A	B
E-28	38	1,5	50	50

316B	304B	304S	304M	316S	316
●	●			●	

1708

R-12 - Rotula para tubo

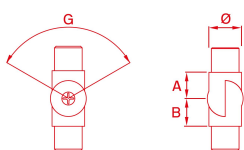


Referencia	T	E	A	B	G
R-12	12	1	12	10	0-180

316B	304B	304S	304M	316S	316
●				●	

1709

R-20 - Rotula para tubo

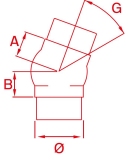


Referencia	T	E	A	B	G
R-20	20	1,5	17	17	100-135

316B	304B	304S	304M	316S	316
●				●	

1710

R-43 - Rotula para tubo

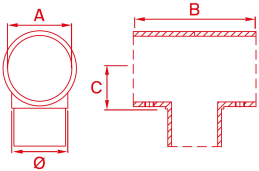


Referencia	T	E	A	B	G
R-43	43	1,5	25	25	100-135

316B	304B	304S	304M	316S	316
●	●			●	

1714

SP -



Referencia	T	E	A	B	C
SP-50	38	1,5	50,8	80	30
SP-43	38	1,5	43	80	26

316B	304B	304S	304M	316S	316
●					
●					

1715

SPE -



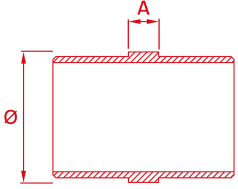
imagen no disponible

Referencia	T	E	A	B	C
MAL					
SPE-43	38	1,5	43	10	26

316B	304B	304S	304M	316S	316
				●	

1711

CE - Casquillo de empalme



Referencia

CE-12

CE-20

CE-38

CE-43

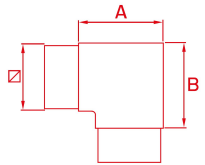
CE-50

316B 304B 304S 304M 316S 316



1701

A-40 - Uadra



Referencia

A-40

E

A

B

1,5

50

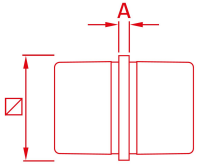
50

316B 304B 304S 304M 316S 316



1712

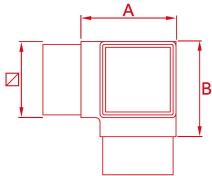
CEQ-40x40 - Casquillo de empalme para tubo cuadrado



Referencia	E	A	316B	304B	304S	304M	316S	316
CEQ-40	1,5	4	●				●	

1716

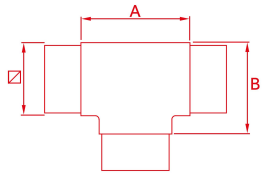
A2-40 - Uadra de tres salidas



Referencia	E	A	B	316B	304B	304S	304M	316S	316
A2-40	1,5	50	50		●				

1717

A3-40 - Conector tipo t de tres salidas

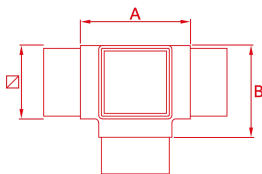


Referencia	E	A	B
A3-40	1,5	60	60

316B	304B	304S	304M	316S	316
	●				

1718

A4-40 - Conector tipo t de cuatro salidas

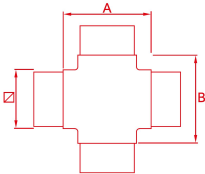


Referencia	E	A	B
A4-40	1,5	60	50

316B	304B	304S	304M	316S	316
	●				

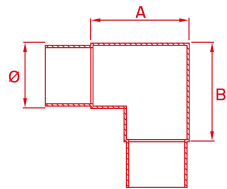
1719

A5-40 - Conector tipo cruz de cuatro salidas



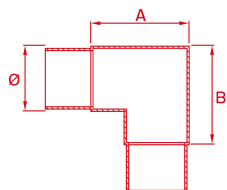
Referencia	A	B	C	316B	304B	304S	304M	316S	316
A5-40	60	60	1,5	●					

TE - Uadra



Referencia	316B	304B	304S	304M	316S	316
E-20	●				●	

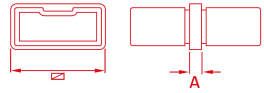
E-20 - Uadra



Referencia	316B	304B	304S	304M	316S	316
E-20	●				●	

1713

CEQ-40X20 - Casquillo de empalme para tubo rectangular

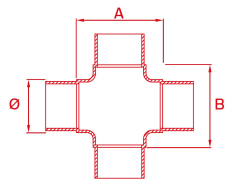


Referencia	E	A	C
CEQ-40	1,5	6	6

316B	304B	304S	304M	316S	316
●				●	

1721

E-23 - Cruz de cuatro salidas

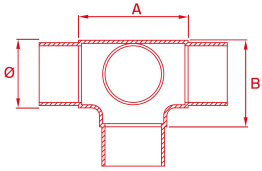


Referencia	T	E	A	B
E-23	43	1,5	70	70

316B	304B	304S	304M	316S	316
●					

1722

E-24 - Uadra de cuatro salidas



Referencia	T	E	A	B
E-24	43	1,5	69	55

316B	304B	304S	304M	316S	316
●					

1410

VESD - Varilla con escuadra articulada derecha



imagen no disponible

Referencia	T	E	A	B	G
VESD-43	43	1,5	56	12	29-40

316B	304B	304S	304M	316S	316
●				●	

1411

VESI - Varilla con escuadra articulada izquierda



imagen no disponible

Referencia	T	E	A	B	G
VESI-43	43	1,5	56	12	29-40

316B	304B	304S	304M	316S	316
●				●	